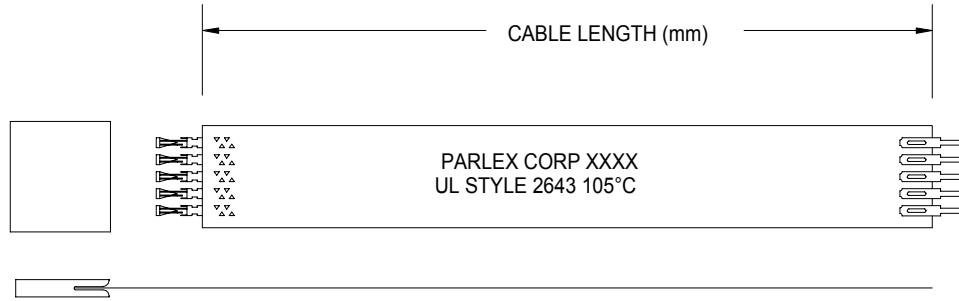


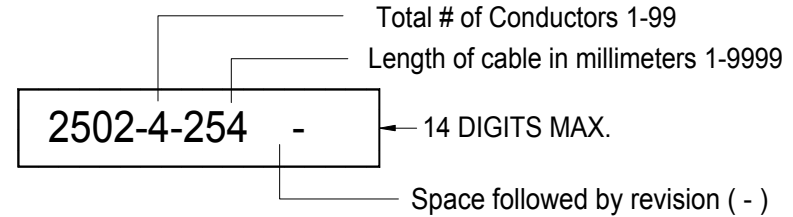
REVISIONS			
LTR	DESCRIPTION	DATE	APPRVD
-	INITIAL RELEASE	12/18/03	



Part Number when ordering

DIMENSION		STANDARD TOLERANCES
CABLE LENGTH	0-3"	±.050" (1.27mm)
	3"-6"	±.060" (1.524mm)
	6"-12"	±.070" (1.778mm)
	12"-18"	±.110" (2.794mm)
	18"-24"	±.120" (3.048mm)
	24"-36"	±.150" (3.810mm)
OVER 36"		±1% OF LENGTH

p/n example
(2502-xx-xxxx -)



Total # of Cond's = 4
Cable Length=10.00"±0.070"

NOTES

- 1) INSULATION: 0.002" THICK POLYESTER FILM W/FLAME RETARDANT ADHESIVE
- 2) CONDUCTORS: 0.003" X 0.050" FLAT BARE COPPER
- 3) U.L. RATING: AWM STYLE 2643, 105°C, VW-1, 300V
- 4) PINS ARE AMP RECEPTACLES 487406-4
- 5) HOUSINGS ARE AMP FEMALE PLAIN, .10" PITCH, REF. AMP 487378 SERIES

TOLERANCES		MATERIAL		P ARLEX CORPORATION 7 INDUSTRIAL WAY SALEM, NH 03079 LAMINATED CABLE DIVISION		
XXX ±	DR BB	DATE	12/18/03	2.54MM-xx-xxxx-FML/PLAIN-ST		
.XX ±	CHK			SIZE	FSCM	Rev.
ANGLES ±	ENG BB	DATE	12/18/03	B	18377	PS-2502
	APPD			SCALE		SHEET OF